



## Employment Facts and Statistics

Office of Economic Opportunity  
 Veterans Benefits Administration  
 BLS Figures (non-seasonally adjusted)

### July-17

#### Unemployment

Cohort (% of total)	Rate	Change	Level	Change	Non-Vets
<b>National</b>	<b>4.3%</b>	<b>-0.1%</b>	<b>7.0M</b>	-	-
>27 Weeks			1.8M	100,000	-
<b>All Veterans (100%)</b>	<b>3.5%</b>	<b>-0.2%</b>	<b>356,000</b>	<b>-22,000</b>	<b>4.4%</b>
Male	3.6%	0.2%	321,000	14,000	4.2%
Female	2.9%	-3.2%	35,000	-36,000	4.7%
<b>Post-9/11 Veterans (43%)</b>	<b>4.6%</b>	<b>-0.5%</b>	<b>153,000</b>	<b>-19,000</b>	-
Male	4.8%	0.3%	134,000	5,000	-
Female	3.6%	-4.9%	19,000	-24,000	-
<b>18-24 Veterans (5%)</b>	<b>9.7%</b>	<b>1.1%</b>	<b>19,000</b>	<b>2,000</b>	<b>8.5%</b>
Male	11.4%	2.9%	19,000	5,000	9.0%
Female*	-	-	-	-	8.0%
<b>25-34 Veterans (28%)</b>	<b>7.2%</b>	<b>-0.6%</b>	<b>100,000</b>	<b>-3,000</b>	<b>4.6%</b>
Male	7.3%	0.0%	84,000	1,000	4.1%
Female	6.7%	-3.6%	15,000	-5,000	5.1%
<b>35-44 Veterans (18%)</b>	<b>3.2%</b>	<b>0.3%</b>	<b>62,000</b>	<b>6,000</b>	<b>3.6%</b>
Male	3.8%	1.1%	62,000	17,000	3.2%
Female*	-	-	-	-	4.1%
<b>45-54 Veterans (15%)</b>	<b>2.1%</b>	<b>-1.2%</b>	<b>55,000</b>	<b>-33,000</b>	<b>3.4%</b>
Male	1.9%	-0.7%	43,000	-17,000	3.3%
Female	3.3%	-4.5%	12,000	-16,000	3.6%
<b>55+ Veterans (34%)</b>	<b>3.1%</b>	<b>0.3%</b>	<b>120,000</b>	<b>6,000</b>	<b>3.4%</b>
Male	3.1%	0.3%	113,000	7,000	2.8%
Female	2.7%	-0.3%	7,000	-1,000	4.0%

\* Does not meet BLS publication criteria

- 13,000 (6%) of all 18-54 Veterans (236,000) are enrolled in school either part time or full time

#### Unemployed by State Data

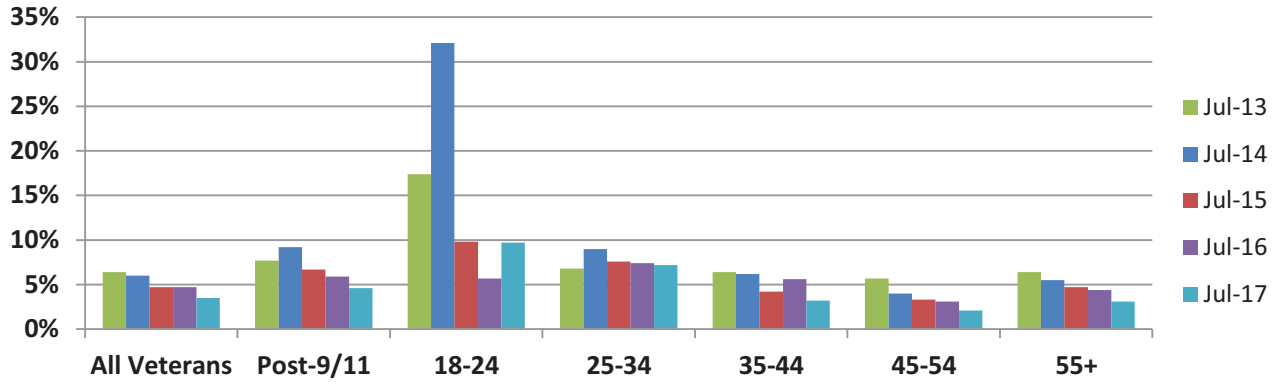
Highest Levels (52% of total)	Level	Highest Rates	Rate
California	37,000	Washington D.C.	*11.9%
Florida / Pennsylvania	30,000	Montana	9.6%
Tennessee	23,000	Rhode Island	8.1%
North Carolina	22,000	New York	8.0%
New York / Virginia	21,000	New Mexico	7.9%

\* Does not meet BLS publication criteria

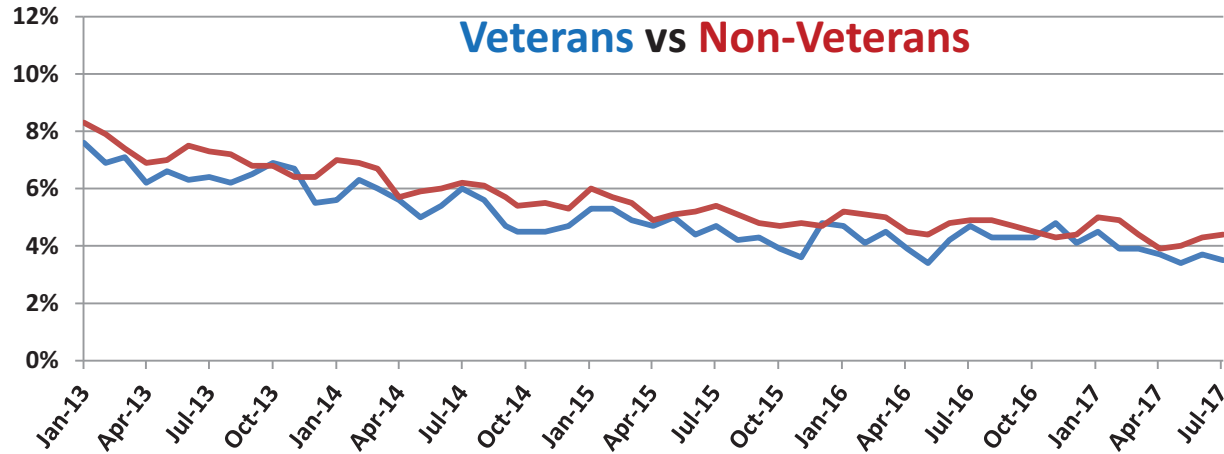
#### Employment Sectors

Sector	+/-	Sector	+/-
Leisure & Hospitality	53,000	Manufacturing	Even
Professional/Business	49,000	Construction	Even
Healthcare	39,000	Wholesale Trade	Even
Financial	Even	Government	Even
Transportation/Warehousing	Even	Retail	Even

## Year-Over-Year Comparison



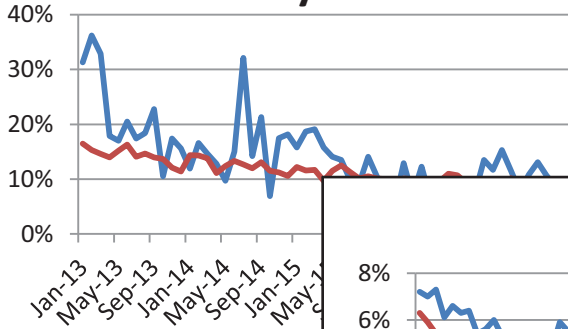
## Veterans vs Non-Veterans



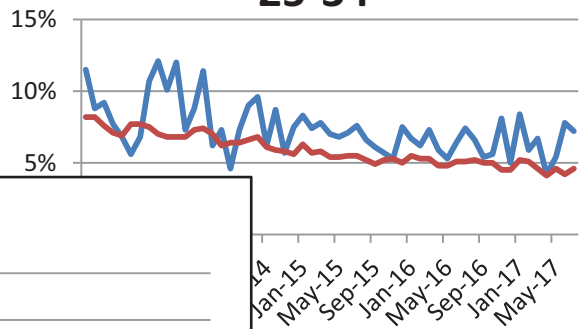
Vets / Non-Vets

Vets / Non-Vets

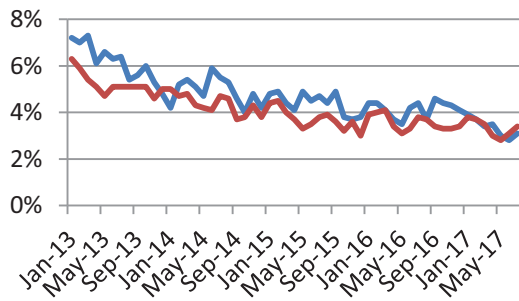
### 18-24 yrs old



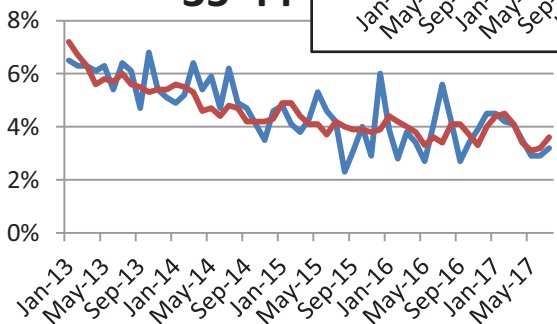
### 25-34



### 55+



### 35-44



### 45-54

